

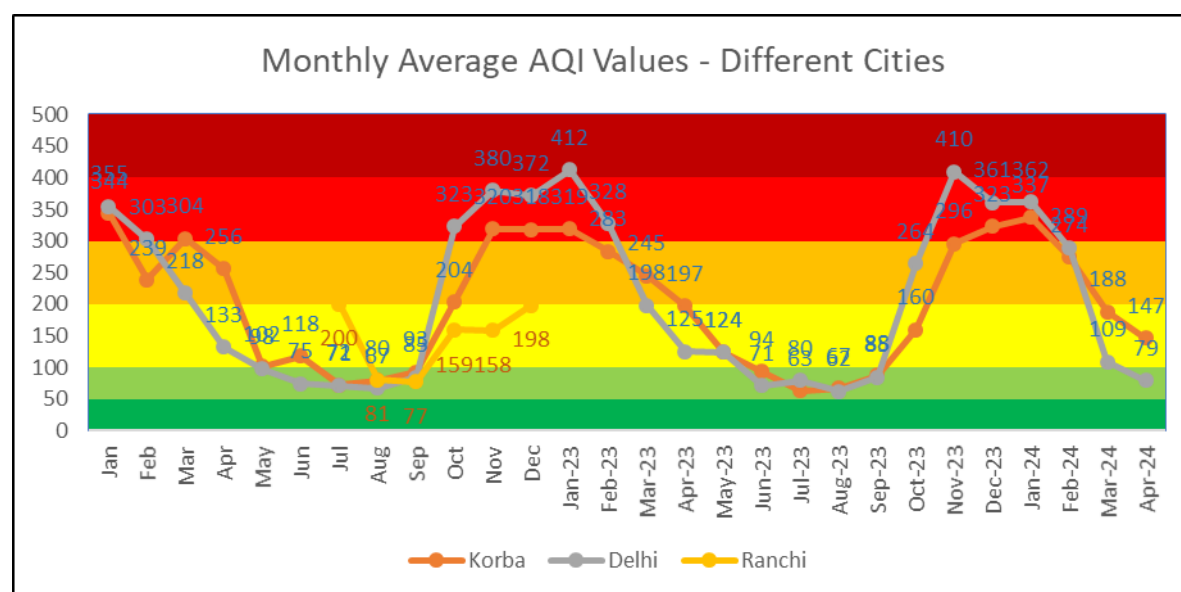
Air Pollution – Brief Analysis for April 2024

As noticed in previous years, as the winter season draws to an end and temperature starts rising, there is a drop in the air pollution in the northern part of the country. AQI has started improving and will continue to improve barring few episodes where high intensity western winds bring lot of dust.

Air pollution is a big issue and needs to be handled urgently. Air sheds which stretch across geographical boundaries need to be understood and plans made. Every stakeholder needs to ensure that all plans which have been made are implemented rigorously and any violation is strictly punished irrespective of politics. Air pollution impacts both rich and poor and it is imperative that steps are taken urgently. Use of purifiers and masks are the last resort and these options are not available to everyone. Pollution hotspots and sources are known, numerous source apportionment studies have been done. Instead of laying blame on one another, it is necessary to tackle the root cause of the problem urgently for the sake of everyone so that air quality improves all year round.

Below is a brief representation of data captured by portable devices installed in multiple locations in Korba and Delhi. The analysis has been done for two reporting periods – (Section 1) January 2022 to April 2024 and (Section 2) 1 April to 30 April 2024.

Section 1 – Data Analysis for period January 2022 to April 2024



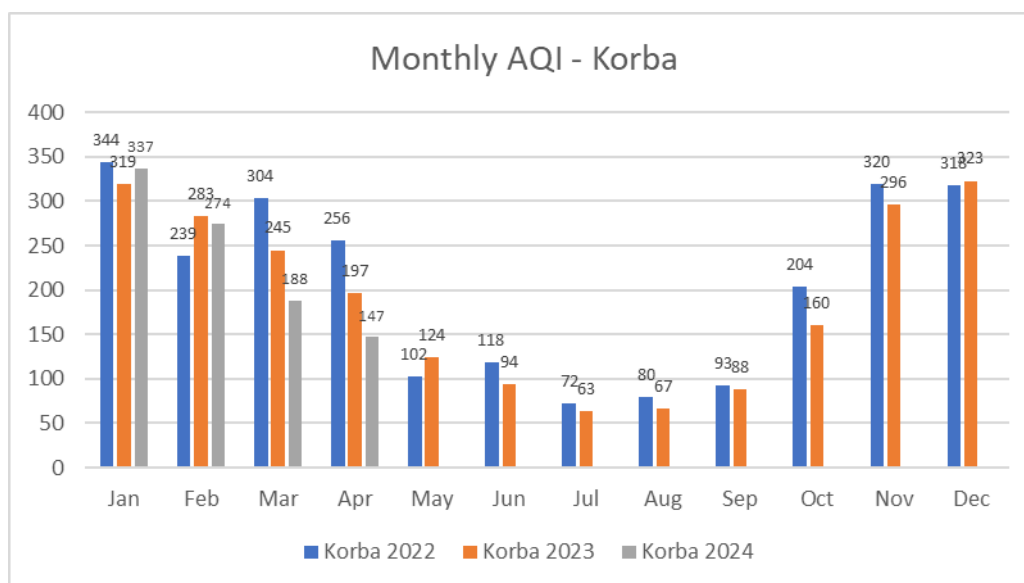
Monthly Average AQI - Different Cities												
	Jan-22	Feb-22	Mar-22	Apr-22	May-22	Jun-22	Jul-22	Aug-22	Sep-22	Oct-22	Nov-22	Dec-22
Korba	344	239	304	256	102	118	72	80	93	204	320	318
Delhi	355	303	218	133	98	75	71	67	85	323	380	372
Ranchi							200	81	77	159	158	198

Monthly Average AQI - Different Cities												
	Jan-23	Feb-23	Mar-23	Apr-23	May-23	Jun-23	Jul-23	Aug-23	Sep-23	Oct-23	Nov-23	Dec-23
Korba	319	283	245	197	124	94	63	67	88	160	296	323
Delhi	412	328	198	125	124	71	80	62	85	264	410	361

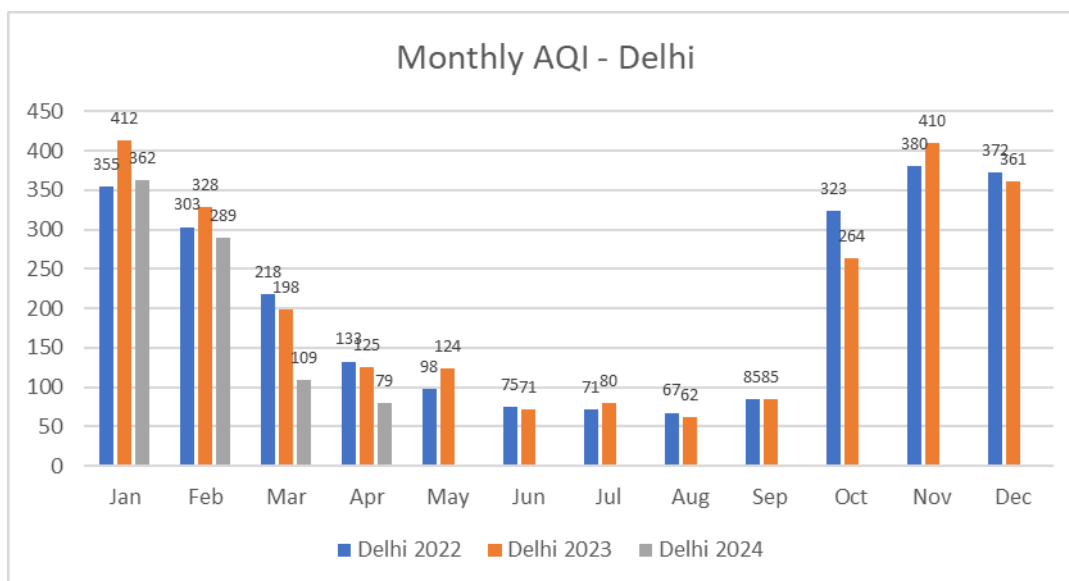
Monthly Average AQI - Different Cities												
	Jan-24	Feb-24	Mar-24	Apr-24	May-24	Jun-24	Jul-24	Aug-24	Sep-24	Oct-24	Nov-24	Dec-24
Korba	337	274	188	147								
Delhi	362	289	109	79								

Table and Graph above show the Average Monthly AQI in different Cities. The graph and data clearly showcase the winter months when AQI comes under dangerous levels and summer and monsoon months when the air quality is Satisfactory. It is clear that AQI increases with the onset of winter and decreases as summer progresses. With the onset of monsoon, there is further improvement. This improvement in Air quality is primarily because of favourable weather conditions and not because of any mitigation aspects taken by the industries or government agencies. In Delhi, starting from the end of October onwards, pollution levels increased dramatically. With the onset of summer and as temperatures have started increasing, air pollution has started showing a downward trend once more.

- During this period, Delhi recorded the worst AQI of 412 in the month of January 2023. November 2023 came close with AQI of 410.
- Out of 28 months, for 19-months AQI in Delhi was above 100 while Korba had AQI above 100 for 22 months. For 10 months AQI in Delhi was over 300 while the figure is 7 for Korba
- April 2024 Air quality has improved over the previous month figures for both Delhi and Korba.
- Air quality is poorer in Korba as compared to Delhi in April 2024
- In comparison between April 2024 and 2023, AQI has improved in both Delhi and Korba
- The different colour bands in the graph respond to the AQI categories as stated in the NAAQs (More later in the document)



The above graph shows the monthly AQI comparison between 2022, 2023 and 2024 for Korba



The above graph shows the monthly AQI comparison between 2022, 2023 and 2024 for Delhi

Monthly Days Korba AQI > Delhi AQI			
2022 (Oct-Nov-dec)	2023	2024 (Till Date)	Total
14	161	83	258

Above table show the number of days in the year when AQI in Korba was more than AQI in Delhi. Out of a total 576 days of monitoring since October 2022, on 258 days or **44.8%** of the time, AQI in Korba was more than AQI in Delhi. Other than the winter season months when AQI in Delhi is alarmingly high, AQI in Korba is generally more than at Delhi on majority of the days. On 28 days in April 2024, AQI in Korba was more than in Delhi

The below table shows the Monthly Average Heat Index for different cities.

Monthly Average HI - Different Cities												
	Jan	Feb	Mar	Apr	May	Jun	Jul	Aug	Sep	Oct	Nov	Dec
Korba	19	24	29	36	40	39	37	35	35	30	23	21
Delhi	17	20	26	32	35	36	39	37	36	28	24	18
Ranchi							31	30	29	24	20	18

Monthly Average HI - Different Cities												
	Jan-23	Feb-23	Mar-23	Apr-23	May-23	Jun-23	Jul-23	Aug-23	Sep-23	Oct-23	Nov-23	Dec-23
Korba	21	24	29	32	35	40	39	35	34	30	25	21
Delhi	16	21	25	29	32	38	39	38	37	30	24	19

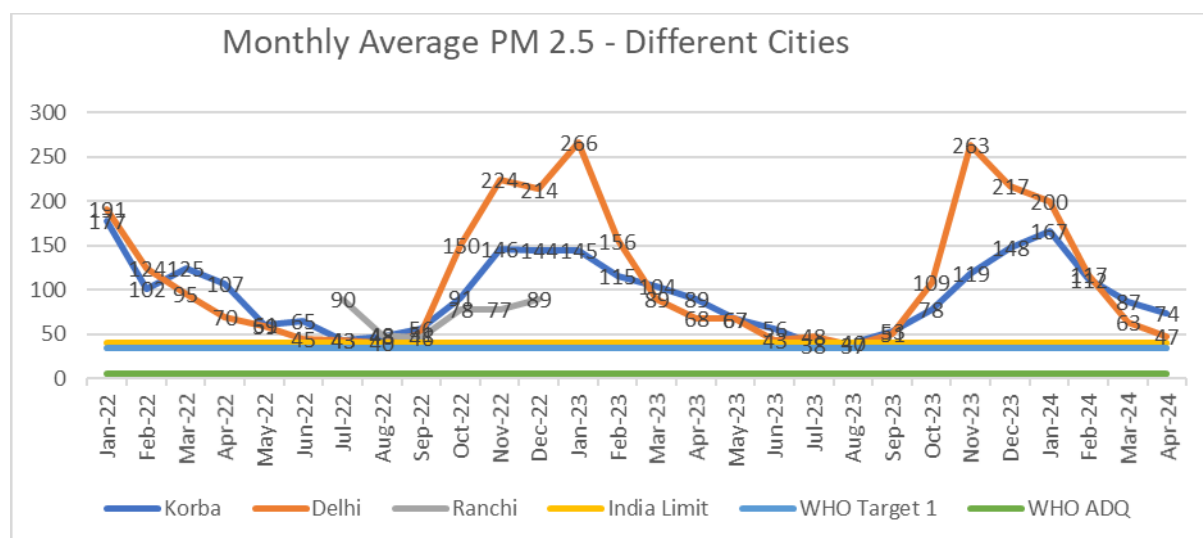
Monthly Average HI - Different Cities												
	Jan-24	Feb-24	Mar-24	Apr-24	May-24	Jun-24	Jul-24	Aug-24	Sep-24	Oct-24	Nov-24	Dec-24
Korba	21	24	30	35								
Delhi	15	19	23	30								

Particulate Matter – Particulate matter or PM is the amount of dust particles in the air. These particles can be of different types i.e. organic, metallic etc. There are different sizes for these particles. Particles of size 10 micron are called PM 10. Those between size of 2.5 and 10 micron are called PM 2.5. those

between 1 and 2.5 micron are labelled as PM1. The smaller the size of the particles, the easier for it to enter the air stream of the body and cause more impact. NAAQS and WHO (World Health Organisation) have both set limits for amount of such particles in the air for PM 2.5 and PM 10. Below are the limits set. The Indian standard values are much higher than the WHO ADQ standard and need to be revised downwards. There are no standards yet for PM 1 which is considerably more harmful.

	PM 2.5 (ug/m3)	PM 10 (ug/m3)
NAAQS (India Annual target)	40	60
WHO Interim target 1	35	70
WHO ADQ Target	5	15

Below is the table and graph showing Monthly Average PM 2.5 values in different cities. In only 2 months in both Korba and Delhi was the Indian standard met. In both Delhi and Korba, the values were more than 4 times the values in some of the months. Only during the monsoon period were the values closer to the standard but were still above. In both Delhi and Korba count of PM 2.5 particles have decreased in comparison with previous month. In comparison with April 2023, count has decreased in both Korba and Delhi



Monthly Average PM 2.5 - Different Cities												
	Jan-22	Feb-22	Mar-22	Apr-22	May-22	Jun-22	Jul-22	Aug-22	Sep-22	Oct-22	Nov-22	Dec-22
Korba	177	102	125	107	61	65	43	48	56	91	146	144
Delhi	191	124	95	70	59	45	43	40	51	150	224	214
Ranchi							90	48	46	78	77	89

Monthly Average PM 2.5 - Different Cities												
	Jan-23	Feb-23	Mar-23	Apr-23	May-23	Jun-23	Jul-23	Aug-23	Sep-23	Oct-23	Nov-23	Dec-23
Korba	145	115	104	89	67	56	38	40	53	78	119	148
Delhi	266	156	89	68	67	43	48	37	51	109	263	217

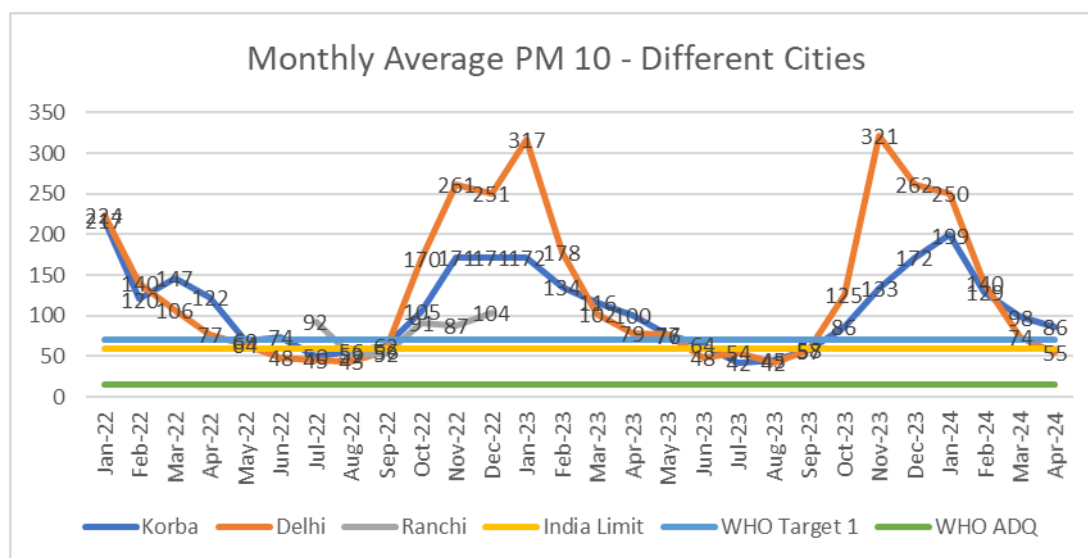
Monthly Average PM 2.5 - Different Cities												
	Jan-24	Feb-24	Mar-24	Apr-24	May-24	Jun-24	Jul-24	Aug-24	Sep-24	Oct-24	Nov-24	Dec-24
Korba	167	112	87	74								
Delhi	200	117	63	47								

The table and graph below show the Monthly Average PM 10 values in different cities. Except for a few months (Highlighted in Green) which were during the summer and monsoon months, none of the cities met the Indian Standards. In comparison with the WHO ADQ standard, none even came close. Values have decreased at both Korba and Delhi as compared to previous month. This shows that the base load of pollutants is very high in both these cities and dust which settles during rains is again air borne once the rain stops and sun comes out. Values have decreased in comparison to April 2023 in both Korba and Delhi

Monthly Average PM 10 - Different Cities												
	Jan-22	Feb-22	Mar-22	Apr-22	May-22	Jun-22	Jul-22	Aug-22	Sep-22	Oct-22	Nov-22	Dec-22
Korba	217	120	147	122	69	74	50	56	62	105	171	171
Delhi	224	140	106	77	64	48	45	43	56	170	261	251
Ranchi							92	52	52	91	87	104

Monthly Average PM 2.5 - Different Cities												
	Jan-23	Feb-23	Mar-23	Apr-23	May-23	Jun-23	Jul-23	Aug-23	Sep-23	Oct-23	Nov-23	Dec-23
Korba	172	134	116	100	76	64	42	45	58	86	133	172
Delhi	317	178	102	79	77	48	54	42	57	125	321	262

Monthly Average PM 2.5 - Different Cities												
	Jan-24	Feb-24	Mar-24	Apr-24	May-24	Jun-24	Jul-24	Aug-24	Sep-24	Oct-24	Nov-24	Dec-24
Korba	199	129	98	86								
Delhi	250	140	74	55								



Data on AQI categories – Under the NAAQS, AQI categories have been listed which lists the different levels of Air pollution. AQI Classification as per NAAQS -

0-50	51-100	101-200	201-300	301-400	>401
------	--------	---------	---------	---------	------

The Table below shows the AQI Categories for All device's location wise since January 2022. The numbers are daily figures for individual devices which have been added up based on cities. It means that AQI in Korba was between 0-50 on 473 daily intervals as recorded by all devices installed in Korba. The data shows that in all locations more than 64% of the days, AQI has been above 100. Delhi and Korba recorded more than 35% of the intervals with AQI above 200.

Location wise Totals (Since January 2022)									
	0-50	50-100	100-200	200-300	300-400	>400	Grand Total	Percent >100	>200
Korba	473	1561	2511	1387	913	315	7160	71.59%	36.52%
Delhi	614	1385	1559	861	652	450	5521	63.79%	35.56%
Ranchi	4	30	63	11	2	0	110	69.09%	11.82%

The Table below show City wise and month wise AQI categories wise information. The numbers are daily figures for individual devices which have been added up based on locations for each month. It means that AQI in Korba was between 50-100 on 12 daily intervals in January 2022 as recorded by all devices installed in Korba. The data shows the severe AQI months for both Korba and Delhi. Atmospheric conditions play a vital role in Air Pollution hence, AQI is Satisfactory in the summer and monsoon month when dispersion of pollutants is high. Weather conditions along with emission sources should be carefully considered and emissions controlled to ensure AQI remains below 100 throughout the year.

In Delhi, during April 2024, 28% of recorded AQI intervals were above 100 while the figure is 66% for Korba. Figures have improved in comparison with the previous month in both Korba and Delhi. The corresponding figure in April 2023 for Delhi was 69% and 68% for Korba.

		0-50	50-100	100-200	200-300	300-400	>400	Grand Total	Percent >100	Percent >200
Korba	Jan	0	12	36	48	31	6	133	91%	64%
	Feb	0	22	118	102	19	4	265	92%	47%
	Mar	0	28	99	56	29	16	228	88%	44%
	Apr	2	13	72	55	27	6	175	91%	50%
	May	4	70	101	9	0	0	184	60%	5%
	June	3	68	113	21	0	0	205	65%	10%
	July	50	74	46	5	0	0	175	29%	3%
	Aug	58	61	52	13	1	0	185	36%	8%
	Sep	19	68	35	2	0	0	124	30%	2%
	Oct	25	63	127	72	44	13	344	74%	38%
	Nov	3	23	64	115	141	40	386	93%	77%
	Dec	0	21	99	112	90	47	369	94%	67%
	Jan-23	0	9	97	117	113	27	363	98%	71%
	Feb-23	2	38	149	82	38	20	329	88%	43%
	Mar-23	2	32	157	113	56	6	366	91%	48%
	Apr-23	11	111	150	63	34	8	377	68%	28%
	May-23	11	105	213	27	10	2	368	68%	11%
	Jun-23	35	163	115	12	2	0	327	39%	4%
	Jul-23	124	116	30	4	0	0	274	12%	1%
	Aug-23	59	111	24	3	0	0	197	14%	2%
	Sep-23	36	90	54	13	2	0	195	35%	8%
	Oct-23	9	52	87	20	28	0	196	69%	24%
	Nov-23	0	7	53	61	47	0	168	96%	64%
	Dec-23	3	16	78	82	68	39	286	93%	66%
	Jan-24	0	20	77	80	78	50	305	93%	68%
	Feb-24	7	43	80	54	22	20	226	78%	42%

	Mar-24	5	62	94	23	17	9	210	68%	23%
	Apr-24	5	63	91	23	16	2	200	66%	21%

		0-50	50-100	100-200	200-300	300-400	>400	Grand Total	Percent >100	Percent >200
Delhi	Jan	0	2	20	88	101	81	292	99%	92%
	Feb	15	32	74	96	85	14	316	85%	62%
	Mar	2	49	172	145	27	0	395	87%	44%
	Apr	10	85	219	59	0	0	373	75%	16%
	May	44	119	187	12	0	0	362	55%	3%
	June	152	134	63	9	3	1	362	21%	4%
	July	76	192	71	5	0	0	344	22%	1%
	Aug	47	83	29	0	0	0	159	18%	0%
	Sep	24	50	38	7	0	0	119	38%	6%
	Oct	10	13	16	31	24	21	115	80%	66%
	Nov	0	0	5	26	57	32	120	100%	96%
	Dec	0	0	7	20	58	39	124	100%	94%
	Jan-23	0	0	3	21	44	56	124	100%	98%
	Feb-23	0	4	17	44	35	12	112	96%	81%
	Mar-23	1	14	55	51	1	0	122	88%	43%
	Apr-23	5	40	84	16	1	0	146	69%	12%
	May-23	26	54	45	30	0	0	155	48%	19%
	Jun-23	37	82	29	1	0	0	149	20%	1%
	Jul-23	22	90	41	2	0	0	155	28%	1%
	Aug-23	61	74	17	0	0	0	152	11%	0%
	Sep-23	33	59	48	7	0	0	147	37%	5%
	Oct-23	2	23	59	41	28	2	155	84%	46%
	Nov-23	0	1	10	26	24	89	150	99%	93%
	Dec-23	0	0	23	26	56	52	157	100%	85%
	Jan-24	0	0	29	34	75	42	180	100%	84%
	Feb-24	1	21	66	44	32	9	173	87%	49%
	Mar-24	11	70	86	15	1	0	183	56%	9%
	Apr-24	35	94	46	5	0	0	180	28%	3%

The Table below show Device wise AQI categories wise information. The numbers are daily figures for individual devices which have been added up till date. It means that AQI measured by device number ending with 66644 was between 50-100 on 66 daily intervals. Most of the devices are measuring AQI above 100 for majority of the intervals.

Device Wise Totals (Selected Devices) – Since January 2022										
	0-50	50-100	100-200	200-300	300-400	>400	Grand Total	Percent >100	Percent >200	
861480034766644	22	66	175	72	83	36	454	80.62%	42.07%	
861480034786105	21	76	225	153	99	12	586	83.45%	45.05%	
861480034775850	68	232	239	111	34	1	685	56.20%	21.31%	
861480034777765	9	50	112	71	37	8	287	79.44%	40.42%	
861480034765562	83	181	252	127	106	1	750	64.80%	31.20%	
861480034757130	34	146	249	45	9	2	485	62.89%	11.55%	
862649042673930	1	60	161	111	52	8	393	84.48%	43.51%	
861480034765406	21	28	189	171	82	89	580	91.55%	58.97%	
861480034774176	7	59	142	100	85	22	415	84.10%	49.88%	
862649042685215	38	112	98	22	20	3	293	48.81%	15.36%	

861480034766461	39	190	218	149	133	121	850	73.06%	47.41%
861480034784522	103	241	243	109	62	36	794	56.68%	26.07%
862649043466961	93	199	210	117	121	90	830	64.82%	39.52%
861480034785552	118	201	188	136	113	58	814	60.81%	37.71%

Section 2 –Information and Analysis for April 2024

Location wise Information				
Location	Average PM 2.5	Average PM 10	Average AQI	Maximum AQI
Korba	74	86	147	1780
Delhi	47	55	79	1315

Table above shows the city wise Average PM 2.5, PM 10, AQI and Maximum AQI for April 2024. AQI is higher in Korba in comparison with Delhi. During this period Maximum AQI is recorded highest in Korba. Although such high numbers have been recorded only for a few intervals but getting such high number for AQI is a matter of grave concern. In Delhi also, the Maximum AQI recorded has exceeded 1000 which is a matter of concern and immediate action.

Comparison of data between April 2022, 2023 and 2024 can be seen in table below. The air quality is improved in both Delhi and Korba consistently. This year has seen high temperatures and high intensity winds in February and March, which reduced air pollution significantly in comparison to previous month. There were few short spells of rain which helped as well. This clearly shows the impact of monsoon and winds on the Air pollution in Delhi. As soon as weather elements become adverse, pollution starts rising.

	Apr-22			Apr-23			Apr-24		
	PM 2.5	PM 10	AQI	PM 2.5	PM 10	AQI	PM 2.5	PM 10	AQI
Korba	107	122	256	89	100	197	74	86	147
Delhi	70	77	133	68	79	125	47	55	79

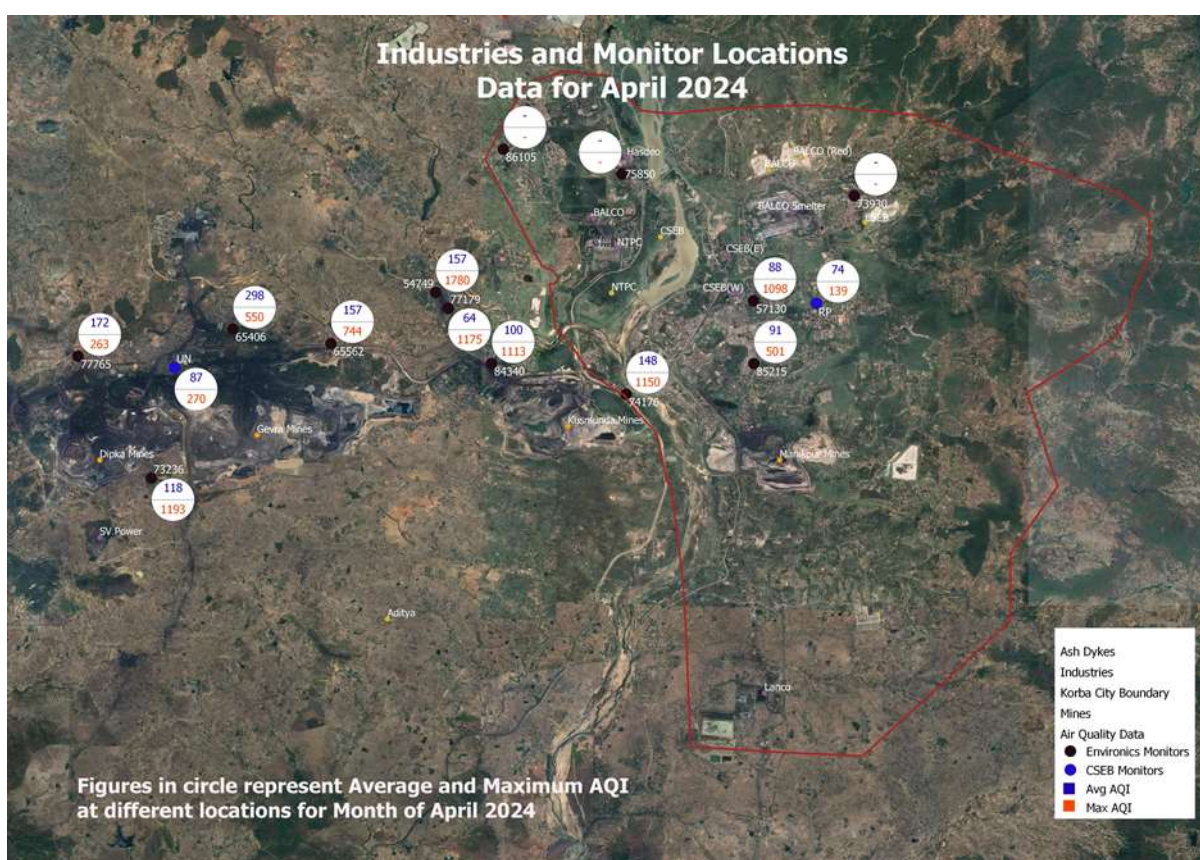
Data for individual devices placed at Korba can be seen in below table. Out of 11 devices which worked in Korba in this period 5 devices recorded maximum AQI greater than 1000. Average Monthly AQI is above 100 in all locations but 4. Device placed at Gevra Rehabilitated Colony recorded the highest Average AQI at 298. Device placed at Surakachar Chowk measured the best AQI at 64

Location Wise Average and Maximum AQI for Devices at Korba			
Device Number	Location	Average AQI	Maximum AQI
861480034786105	NTPC Jamnipalli Housing Colony	-	-
861480034775850	Child Home Darri	-	-
861480034777765	Sirki. Dipka Rehab Colony	172	263
861480034765562	Gevra Mines Rehabilitated Area	157	744
861480034757130	Korba City, Patharipara	88	1098
862649042673930	Balco Housing Board (Indira Market)	-	-
861480034765406	Vijaynagar. Gevra Rehab Colony	298	550
861480034774176	Old Age Home, Near Sarvmangla Mandir	148	1150
862649042685215	RSS Nagar	91	501
861480034781205	raliya village	-	-
861480034777179	Surakachar chowk (underground Mines)	64	1175
861480034784340	Kanha Auto repairs, Station road	100	1113

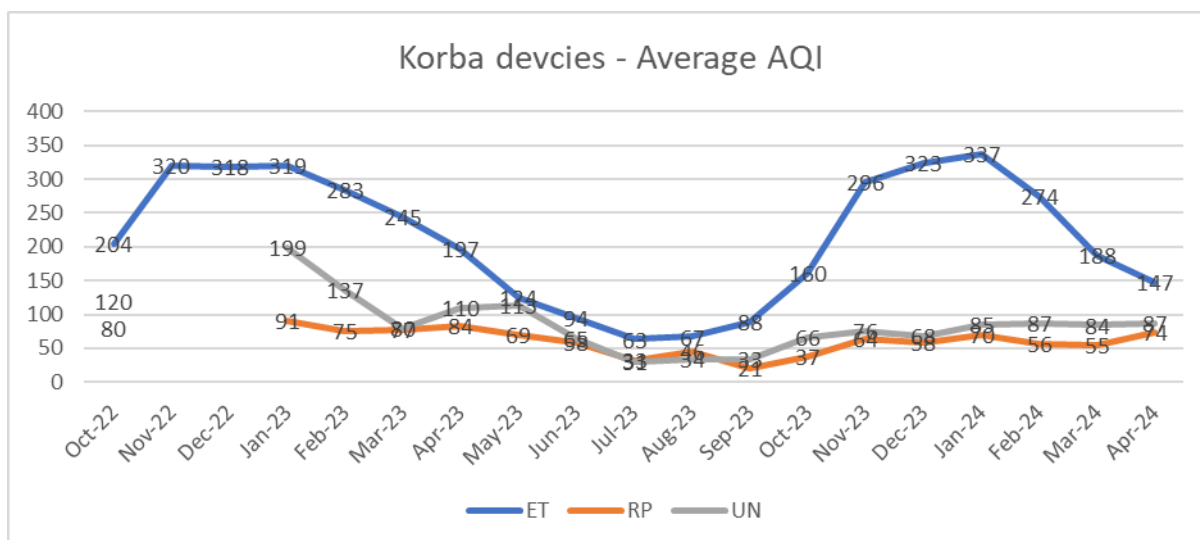
861480034773236	Aryan Public School, Hardi Bazaar	118	1193
861480034754749	Gud Deva	157	1780

The map image below shows the locations of the devices installed in Korba along with the locations of major coal mines, Thermal power plants and ash dykes. The Korba municipal boundary is marked in Red colour. The numbers in the map show the Average and Maximum AQI for each location along with the device number. Two monitors have been installed by CSEB at Ram Pur and Urja Nagar. Average Monthly AQI for April 2024 recorded by these devices is as below. Devices placed by Environics have been consistently recording higher AQI values. It may be because of placement of devices around Pollution sources which show such stark differences

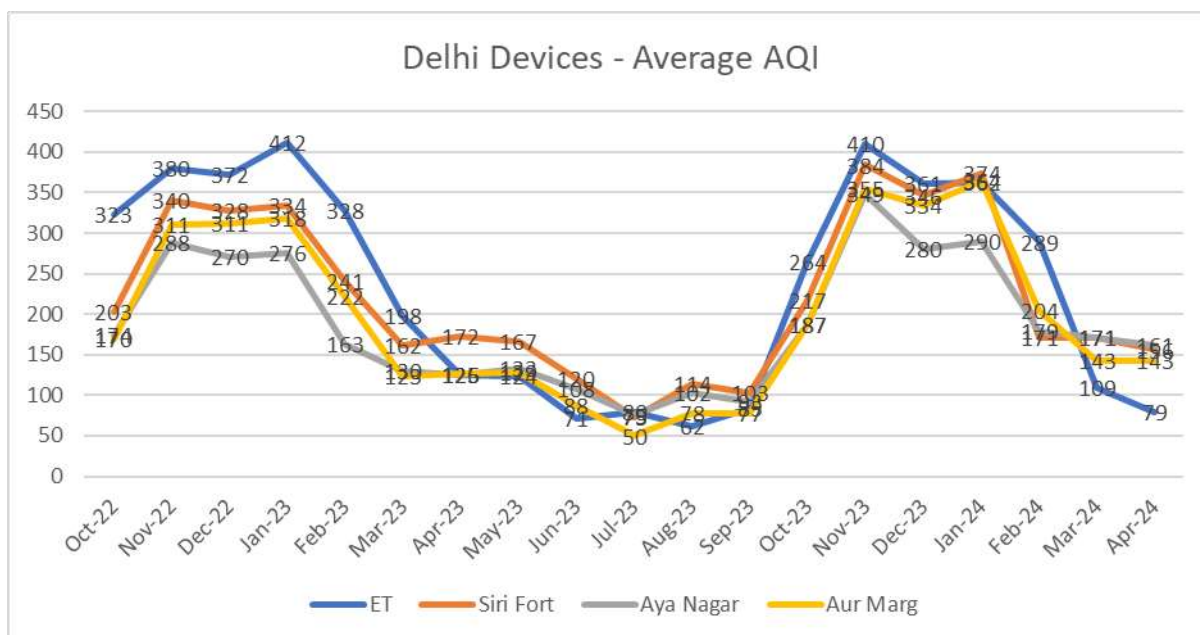
	Ram Pur	Urja Nagar	ET Devices
April 2024	74	87	147



Map – Device Install and industrial locations at Korba. Numbers reflect Average and Maximum AQI of the location for April 2024. Map also shows the location of major coal mines, Thermal Power Plants and Ash Dykes. Korba Municipal Boundary is marked in Red colour



The above graph shows the monthly AQI comparison between devices installed by Environics and those installed by the Chhattisgarh Environment board. In all the instances the devices installed by ET are recording higher AQI values.



The above graph shows the comparison between Environics Devices in Delhi and CPCB devices installed at three nearest locations to our office

The Tables below show Daily Average AQI between different cities for April 2024. Cells where AQI >100 have been highlighted. AQI in Delhi was the lowest at 48 and went up to 153. Even in Korba, AQI has been between 63 and 322. Both Korba and Delhi are fighting for the top spot in bad air quality with Korba leaving Delhi behind in number of bad air days in this month.

Daily average AQI for Different Cities for April 2024															
	1	2	3	4	5	6	7	8	9	10	11	12	13	14	15
Korba	204	198	224	322	186	219	215	102	158	187	89	191	193	135	169
Delhi	50	117	101	60	66	65	88	88	128	150	98	131	80	82	153

Daily average AQI for Different Cities for April 2024															
	16	17	18	19	20	21	22	23	24	25	26	27	28	29	30
Korba	109	127	91	179	120	118	148	63	94	121	145	128	110	179	149
Delhi	99	51	54	48	54	54	48	65	71	97	71	49	58	82	70

This information in terms of AQI categories can be seen in the table below. Delhi had 0 days when AQI was above 200 and Korba had 4 such days

	0-50	51-100	101-200	201-300	301-400	>401	Not Work	
Korba	0	4	21	4	1	0	0	30
Delhi	4	20	6	0	0	0	0	30

Table - City wise categories for April 2024

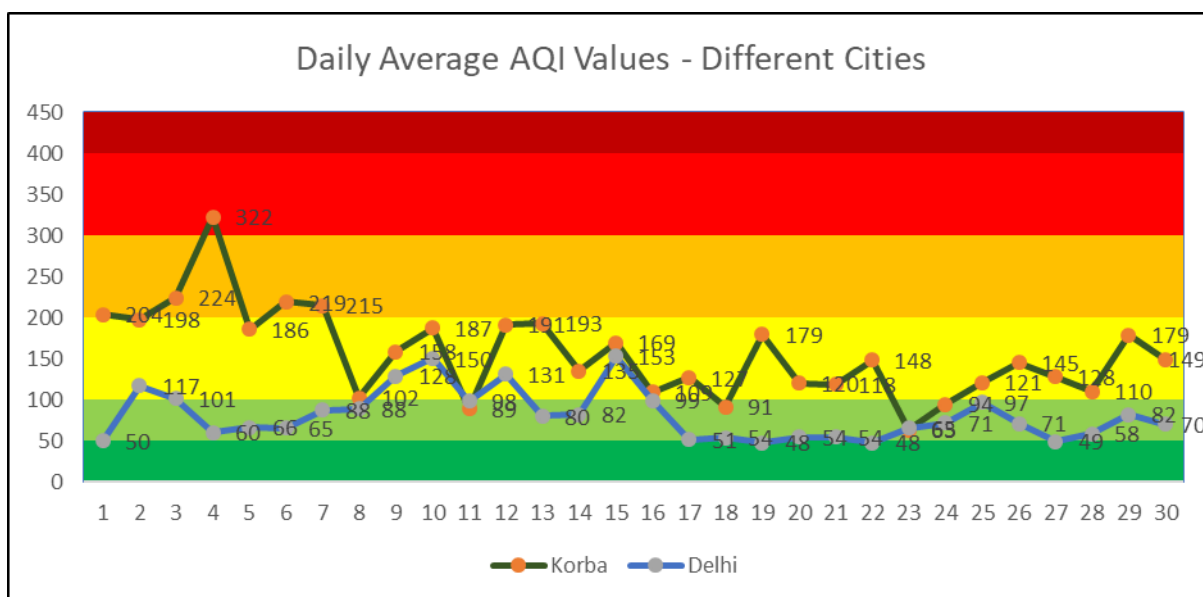


Table below shows the Daily Average AQI for individual devices placed at Korba. Figures above 250 have been marked in Red. Blank implies device did not work

Average AQI, Device Wise at Korba for April 2024														
Dat e	8610 5	7585 0	7776 5	6556 2	5713 0	7393 0	6540 6	7417 6	8521 5	8120 5	7717 9	8434 0	7323 6	5474 9
1	-	-	-	226		-	328			-	67	131	166	212
2				197			350				63	131	131	181
3				210			363				85	145	127	223
4				341			379					204	319	298
5				199			318	136				145	144	168
6				234			256	274				152	105	204
7				159	106		442	185				77	85	171
8				113	193		230	107				60	86	153
9				151			344	118			62	87	141	154
10				157			348	130			55	89	146	188
11				67			169	57			50	47	73	122
12				176			319	135			107	80	137	184
13				245	63		334	155				100	162	195
14				145			282	97				83	109	131
15				88			362	134				70	79	83

16			172	86	64		214	139				78	81	154
17				92	60		304	128				83	74	
18				109	52		164	164				93	102	
19				185	136		286	216				116	136	
20				156	119		270	182				99	109	64
21				156	69		207	172				92	77	187
22				134			302	130	119				118	118
23				77				100	61			56	62	74
24				80			322	84	43			51	86	90
25				113			261	141	98			93	53	125
26				133			373	167	75			70	102	95
27				107	63		424	97	124			81	92	77
28				156	67			187	139			100	132	151
29				227	76			222	97			130	176	224
30				173	97		259	174	76				117	143

Table - AQI Category wise information for individual devices

AQI categories Wise Information for Different Devices - April 2024										
Device Number	Location	0-50	50-100	100-200	200-300	300-400	>400	Grand Total	Percent >100	Percent >200
861480034766644	Delhi	7	16	7				30	23%	0%
861480034786105	Korba	-	-	-	-	-	-	0	-	-
861480034775850	Korba	-	-	-	-	-	-	0	-	-
861480034777765	Korba			1				1	100%	0%
861480034765562	Korba		6	18	5	1		30	80%	20%
861480034757130	Korba		9	4				13	31%	0%
862649042673930	Korba	-	-	-	-	-	-	0	-	-
861480034765406	Korba			2	9	14	2	27	100%	93%
861480034774176	Korba		4	19	3			26	85%	12%
862649042685215	Korba	1	5	3				9	33%	0%
861480034781205	Korba	-	-	-	-	-	-	0	-	-
861480034777179	Korba	3	5	1				9	11%	0%
861480034784340	Korba	1	17	9	1			28	36%	4%
861480034773236	Korba		11	18		1		30	63%	3%
862649042690587	Korba	-	-	-	-	-	-	0	-	-
861480034754749	Korba		6	16	5			27	78%	19%
861480034766461	Delhi	1	15	14				30	47%	0%
861480034784522	Delhi	10	20					30	0%	0%
862649043466961	Delhi	6	15	7	2			30	30%	7%
861480034785552	Delhi	10	13	7				30	23%	0%
861480034766453	Delhi	1	15	11	3			30	47%	10%

Time Interval Wise Average AQI at different Cities and devices for April 2024 can be seen in table below

Row Labels	Midnight to 6 AM	6 AM to 12 Noon	12 Noon to 6 PM	6 PM to midnight
Delhi	90	131	69	72
66453	119	182	77	86
66461	119	162	60	89
66644	65	107	88	66

66961	92	127	69	72
84522	61	74	39	49
85552	71	111	58	56
Korba	156	162	69	147
54749	190	177	81	180
57130	91	111	45	88
65406	318	288	335	292
65562	188	182	81	174
73236	132	142	78	117
74176	185	188	63	154
77179	69	78	38	70
77765		172		
84340	106	129	47	112
85215	67	105	45	147

Time Interval Wise Maximum AQI at different Cities and devices for April 2024 can be seen in table below

Row Labels	Midnight to 6 AM	6 AM to 12 Noon	12 Noon to 6 PM	6 PM to midnight
Delhi	1158	1315	1305	1063
66453	463	895	342	326
66461	1158	1315	1305	1063
66644	354	905	581	577
66961	338	391	351	531
84522	342	371	197	313
85552	317	407	323	305
Korba	1780	1295	1638	1568
54749	1780	1295	1638	1568
57130	355	1098	93	908
65406	550	538	458	546
65562	491	744	364	586
73236	480	949	1193	725
74176	718	1150	437	525
77179	1125	1175	658	362
77765		263		
84340	347	1113	508	706
85215	341	382	107	501

Annexure 1 – Device Locations

Device Name / Location	Current City	City
861480034766644	Shifted to Delhi in December 2023	Delhi
861480034786105	NTPC Colony	Korba
861480034775850	Child Home Darri	Korba
861480034777765	Sirki Village	Korba

861480034765562	Gevra Mines Rehabilitated Area	Korba
861480034757130	Korba City, Patharipara	Korba
862649042673930	Balco Housing Board	Korba
861480034765406	Vijaynagar	Korba
861480034774176	Old Age Home, Near Sarvmangla Mandir	Korba
862649042685215	RSS Nagar	Korba
861480034781205	Raliya Village	Korba
861480034777179	Surakachar chowk (underground Mines)	Korba
861480034784340	Station road	Korba
861480034773236	Hardi Bazaar	Korba
862649042690587	Near BALCO Main Plant	Korba
861480034754749	Gud Deva	Korba
861480034766461	Delhi	Delhi
861480034784522	Delhi	Delhi
862649043466961	Delhi	Delhi
861480034785552	Delhi	Delhi
861480034766453	Delhi – since April 2023	Delhi